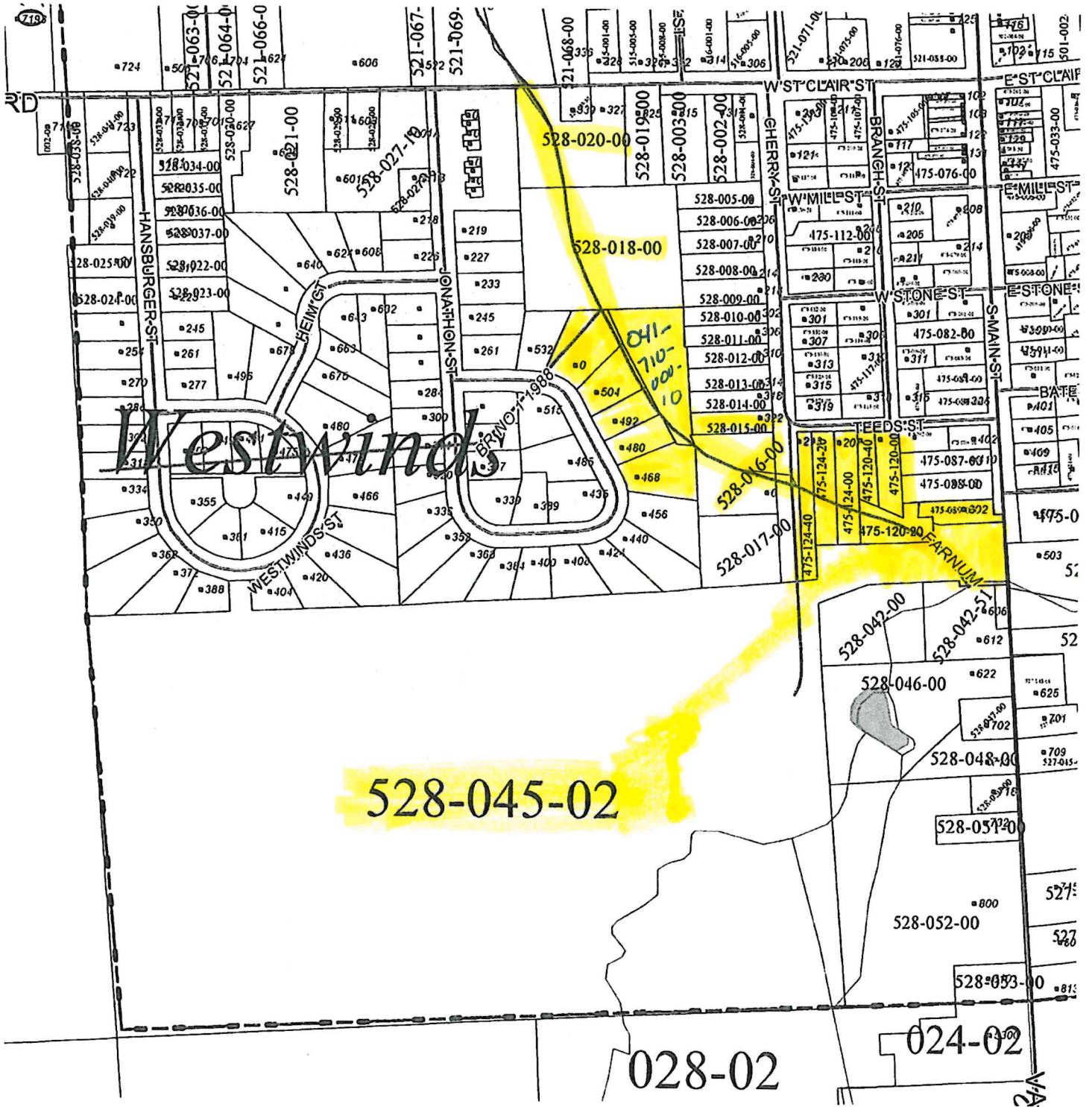


NE 1/4 OF SECTION 28
 VILLAGE OF ALMONT 041
 ALMONT TWP (T6N-R12E)
 LAPEER COUNTY, MICHIGAN



1"=400'

NOT TO BE REPRODUCED
 WITHOUT PRIOR WRITTEN CONSENT
 FROM THE COUNTY OF LAPEER

PRODUCED (05-19) BY:
 LAPEER CO EQ/GIS/TREAS
 255 CLAY ST #303, LAPEER MI 48446
 810-667-0228 or 810-667-0239
 Parcel lines may be current to 2018.